


## Set NAO's Second Language

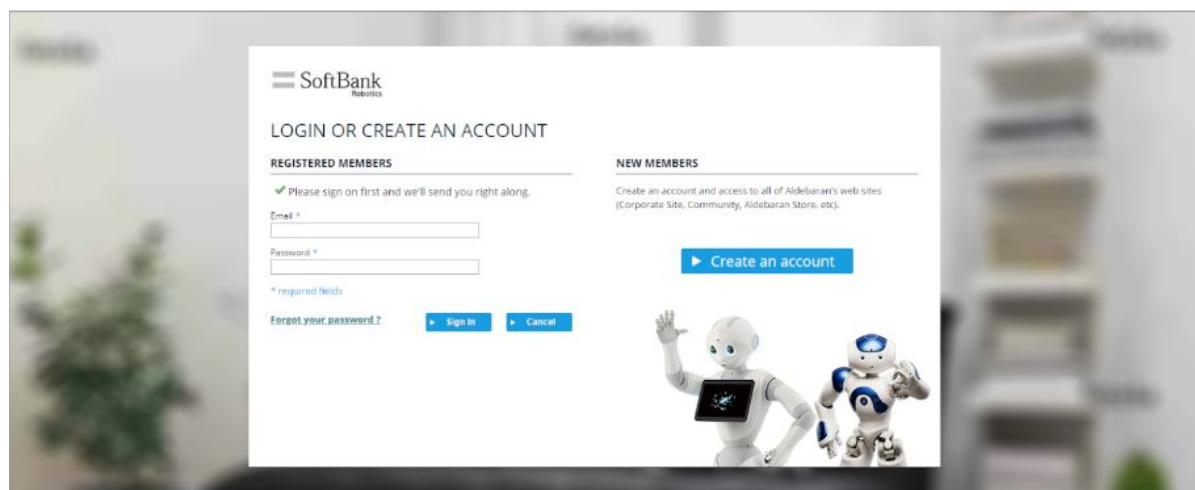
The first language of your robot is set during the initial configuration. To add a second language, directly download and install it via the [Applications Store](#).

 Depending on your contract, you will need to contact your reseller or Sales Representative to add additional languages.

1. On your computer, go online to the [Applications Store](#).



2. Sign in with your SoftBank Robotics account.

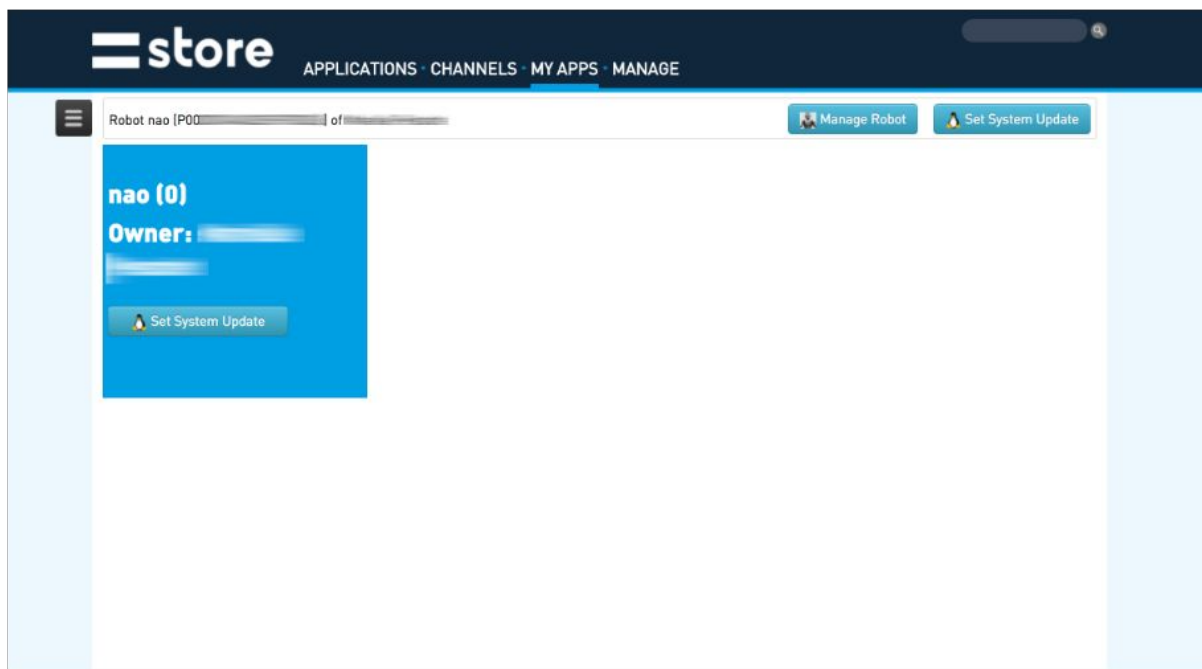


3. The Applications Store opens. Select « My Apps » in the navigation bar.



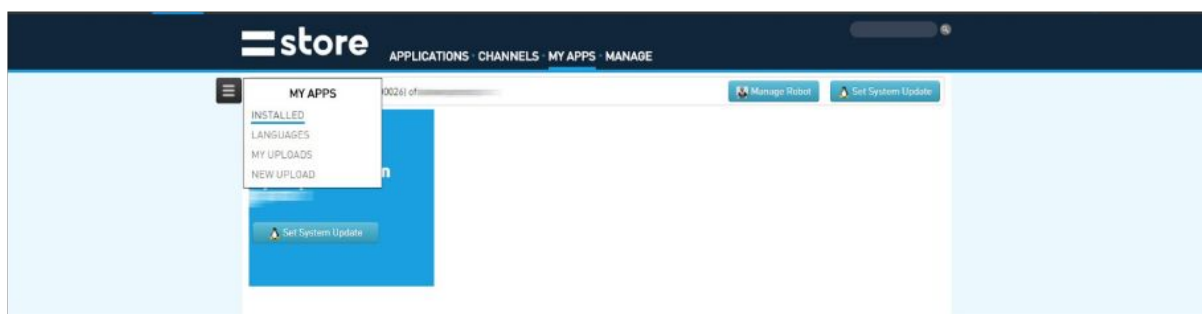
Applications Store front page

4. « My Apps » page opens.



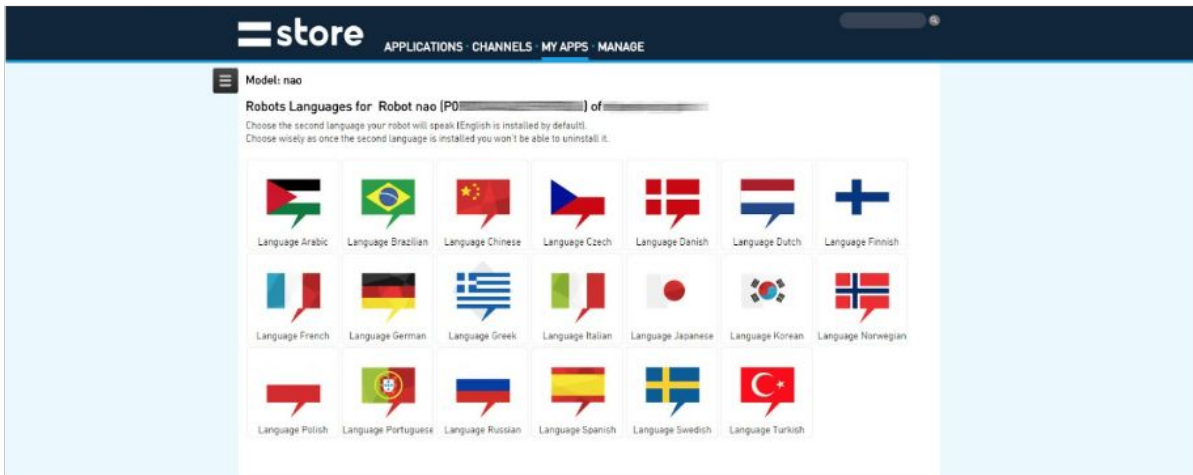
My Apps page

5. Click the menu icon on the left and select « Languages ».



My Apps submenu

6. The languages available for your robot are displayed. If you own several robots, make sure your NAO is selected in the « You are working on » drop-down list. Note: there is no drop-down list if you own only one robot.

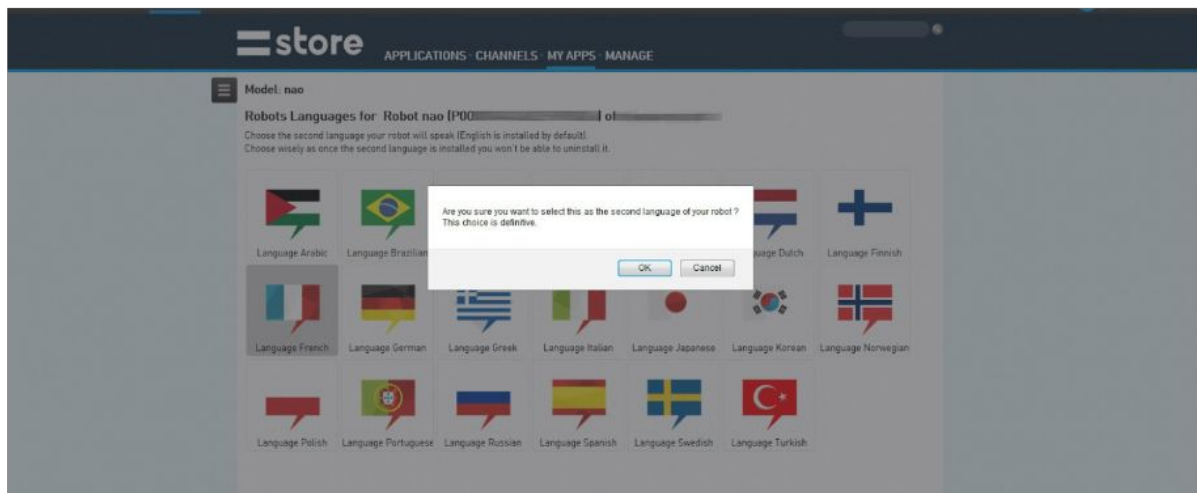


*Language selection*

7. Select the language you want for your robot's second language.

! Be careful when selecting the second language for your robot as you will not be able to select a different language afterwards. The second language option is linked to your robot's ID and the choice cannot be undone.

8. Click the icon of the language to select it. A confirmation pop-up window opens.



*Language choice confirmation box*

Two languages are now associated to your NAO.

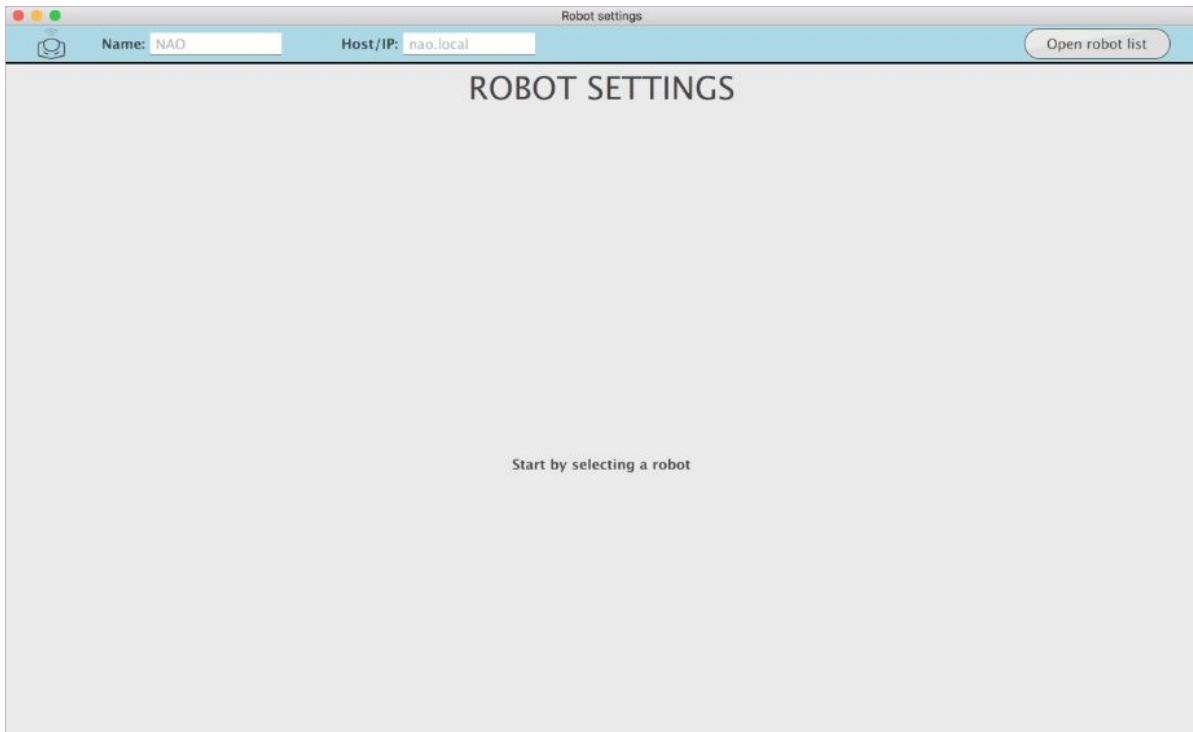


*Robot's languages*

To finish the installation process, you need to launch Robot Settings on your computer.

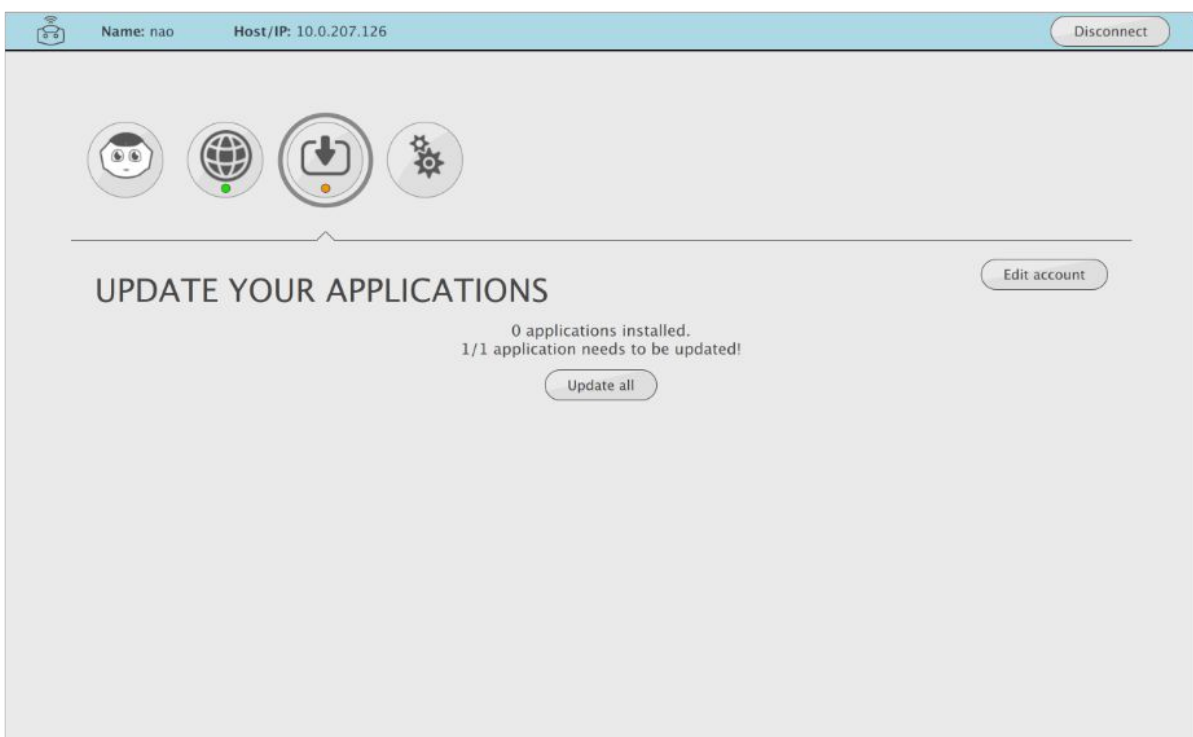
! Make sure your robot and your computer are connected to the same network and that your computer is connected to the Internet.

9. Open Robot Settings and connect your robot (either with its IP address or with the « Open robot list » button).



*Robot Settings connection page*

10. Open the « Update Your Applications » menu.



*Update Your Applications menu*

11. Click « Update all » to download and install the language on NAO.

Check that the language has been properly installed on your NAO:

- The Chest Button blinks green and the robot makes a « blip » sound.
- Press the Chest Button once to hear the notification message: the robot says: « Hello I'm NAO. My internet address is [...] I have installed [...] »

